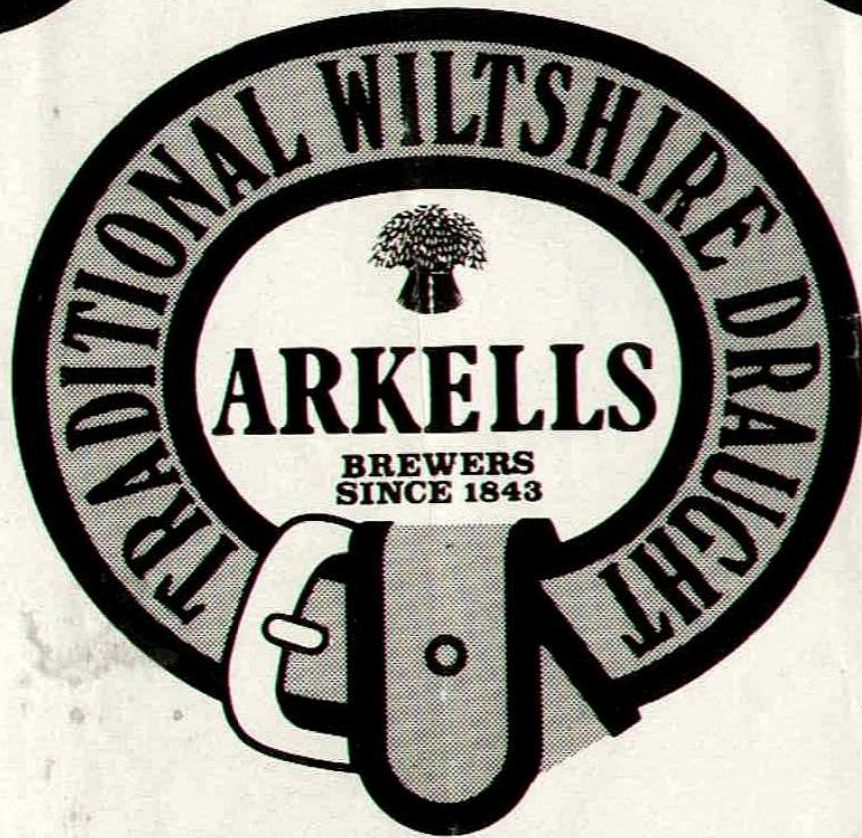
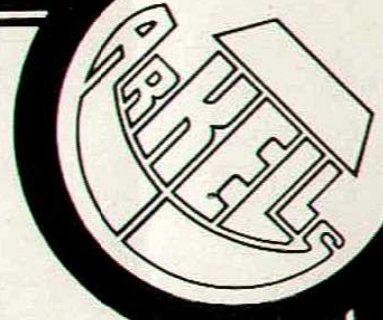


**SWINDON
TOWN
FOOTBALL
CLUB**

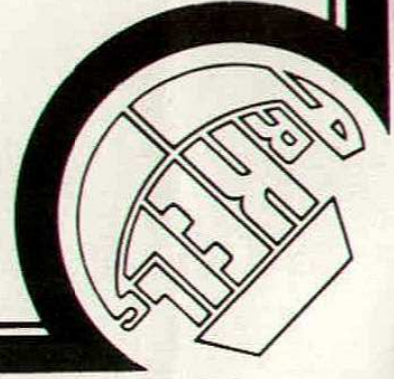
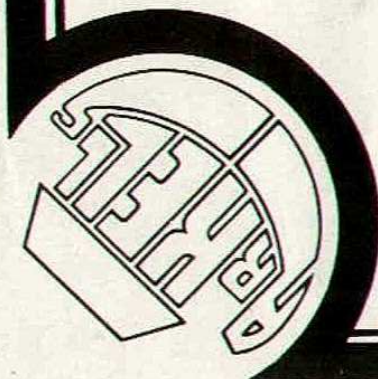
BARNESLEY

Official Match Day Magazine 20p



Enjoy the true country taste
of our traditional beers

J. ARKELL & SONS LTD
KINGSDOWN BREWERY
SWINDON



Swindon Town Football Company Limited

Registered Office County Ground Swindon

President Mr. W. J. Castle

Chairman C. J. Green

Vice-Chairman C. Cowley

Directors C. Day, A. W. Done, W. Dore,

M. W. Earle, T. J. Kearsey, L. Smart,

R. Stephenson, G. Whittock

Administrative Manager/Secretary R. J. Jefferies

Telephone No. 22118

Financial Manager/Company Secretary

R. A. Morse

Team Manager R. W. Smith

Commercial Consultant D. Buswell

Club Medical Officer Dr. J. Nicholas

Wilf Tranter says.....

As Bob Smith is away searching for players to strengthen our squad it has fallen my lot to write these notes for the last programme of Season 1979/80, a season of two parts where everyone greatly enjoyed the magnificent football displayed by the team up until the tragic exits from the two Cup Competitions. But somehow, try as we might, we could not rekindle that extra spirit to enable us to push for promotion although you can take it from me it was not for want of trying. On the Managerial side we now know that the requirements necessary for a promotion side are not quite there and we have been striving through the last few weeks of this season and will continue throughout the close season to sign the necessary kind of defenders that will cut out away defeats drastically (15 this season). You do not need to be a mathematician to realise that if we could eliminate a half of those away defeats and maintain our home form then we would be serious promotion contenders.

For those of you kind enough to sponsor the goals that our players have scored this season the position prior to Tuesday evening's game against Millwall (due to the printers' dispute I

am writing on Tuesday morning) is as follows and we shall be grateful if you will add any goals scored in the last two games, multiply the total by the amount you have sponsored per goal and forward your sponsorship sum to Bob Jefferies.

Alan Mayes 28, Andy Rowland 27, Ray McHale 11, Chris Kamara 7, Billy Tucker 5, Ian Miller 4, Roy Carter 4, Brian Williams 4, Russell Lewis 3, Kenny Stroud 1, Glen Cockerill 1, Jimmy Allan 16 "clean sheets" (12 League, 2 League Cup and 2 FA Cup).

In conclusion, on behalf of all at the Club, I would like to thank all of those people who have assisted, throughout a very exacting season, to stage the games at the County Ground, the gatemen and stewards, catering staff, programme sellers, the police and ambulance men and Chris and Bob in the Souvenir Shop. If I have missed anyone I am sorry. But most of all we would thank you, the supporters for the magnificent way you have supported the team, they and we have greatly appreciated the spur you have given to the players without which, I am sure, we would not have had such an exciting season. Thanks to you all.

Matches on the County Ground next week

Monday 5 May Wiltshire Professional
Shield Final - 2nd Leg.

Chippenham
Town K.O.
3.0 p.m.

Tuesday 6 May Football Combination

Reading K.O.
2.30 p.m.

Wednesday 7 May Police International

England
v
Wales K.O.
7.30 p.m.

RESULTS

79-80

FIXTURES

| | | | | |
|------|----|-----------------------------|---|-----|
| Aug | 11 | Portsmouth (L.Cup 1-Leg 1) | A | 1-1 |
| | 14 | Portsmouth (L.Cup 1-Leg 2) | H | 2-0 |
| | 18 | Sheffield Utd. | A | 1-2 |
| | 21 | Reading | H | 0-0 |
| | 25 | Brentford | H | 4-0 |
| | 28 | Chester (L.Cup 2 - Leg 1) | H | 1-0 |
| | 31 | Colchester | A | 3-2 |
| Sep. | 5 | Chester (L.Cup 2 - Leg 2) | A | 1-1 |
| | 8 | Rotherham Utd. | A | 0-3 |
| | 15 | Chesterfield | H | 2-1 |
| | 18 | Chester | H | 3-1 |
| | 21 | Sheffield W. | A | 2-4 |
| | 26 | Stoke City (L.Cup - 3) | A | 2-2 |
| | 29 | Grimsby Town | H | 3-0 |
| Oct. | 2 | Stoke City (L.Cup 3) replay | H | 2-1 |
| | 6 | Hull City | H | 0-0 |
| | 10 | Reading | A | 1-2 |
| | 13 | Wimbledon | A | 0-2 |
| | 20 | Southend Utd. | H | 1-0 |
| | 23 | Plymouth A | H | 2-1 |
| | 27 | Blackpool | A | 1-0 |
| | 30 | Wimbledon (L.Cup - 4) | A | 2-1 |
| Nov. | 3 | Sheffield Utd. | H | 3-2 |
| | 6 | Plymouth A | A | 0-2 |
| | 10 | Mansfield T. | A | 1-1 |
| | 17 | Blackburn Rovers | H | 2-0 |
| | 24 | Brentford (F.A. Cup 1) | H | 4-1 |
| Dec. | 1 | Gillingham | A | 0-0 |
| | 4 | Arsenal (L.C.6) | A | 1-1 |
| | 8 | Bury | H | 8-0 |
| | 11 | Arsenal (L.C. 5) replay | H | 4-3 |
| | 18 | Torquay (F.A. Cup 2) | A | 3-3 |
| | 22 | Torquay (F.A. Cup 2) replay | H | 3-2 |
| | 26 | Exeter City | H | 2-3 |
| | 29 | Brentford | A | 3-1 |

1980

| | | | | |
|-------|----|------------------------------------|---|-----|
| Jan. | 5 | Luton Town (F.A. Cup) 3 | A | 2-0 |
| | 12 | Barnsley | A | 2-1 |
| | 22 | Wolverhampton W (FLC-Semi F Leg 1) | H | 2-1 |
| | 26 | Tottenham H. (F.A.Cup 4) | H | 0-0 |
| | 29 | Tottenham H (FA Cup 4 - replay) | A | 1-2 |
| Feb. | 6 | Oxford Utd. | A | 2-2 |
| | 9 | Sheffield Weds. | H | 1-2 |
| | 12 | Wolverhampton W (FLC-Semi F-Leg 2) | A | 1-3 |
| | 16 | Grimsby Tn. | A | 0-2 |
| | 23 | Wimbledon | H | 2-1 |
| | 29 | Southend Utd. | A | 0-1 |
| Mar. | 4 | Millwall | A | 2-6 |
| | 8 | Blackpool | H | 2-1 |
| | 11 | Carlisle Utd. | H | 0-0 |
| | 14 | Hull City | A | 0-1 |
| | 19 | Chester | A | 0-1 |
| | 22 | Mansfield Town | H | 2-1 |
| | 25 | Chesterfield | A | 1-2 |
| | 29 | Blackburn Rovers | A | 0-2 |
| April | 5 | Exeter City | A | 1-4 |
| | 7 | Oxford United | H | 1-1 |
| | 12 | Carlisle United | A | 1-2 |
| | 15 | Rotherham | H | 6-2 |
| | 19 | Gillingham | H | 3-0 |
| | 22 | Colchester Utd. | H | 2-3 |
| | 26 | Bury | A | 0-0 |
| | 29 | Millwall | H | 1-0 |
| May | 3 | Barnsley | H | |

football combination

| | | | | |
|-------|----|---|-----------------|-----|
| Aug | 18 | H | BRISTOL CITY | 0-4 |
| | 20 | A | Luton Town | 1-1 |
| | 25 | A | Oxford Utd. | 1-4 |
| Sept. | 1 | A | Norwich City | 0-3 |
| | 8 | H | BRISTOL ROV. | 0-1 |
| | 12 | A | Reading | 1-2 |
| | 22 | H | CHELSEA | 0-2 |
| | 27 | A | Cardiff City | 1-5 |
| | 29 | A | Hereford Utd. | 3-1 |
| Oct | 7 | A | Leicester City | 0-1 |
| | 9 | H | LUTON TOWN | 1-1 |
| | 13 | H | ORIENT | 1-0 |
| | 20 | A | Tottenham H | 0-4 |
| | 23 | A | Crystal Palace | 0-1 |
| | 27 | H | SOUTHAMPTON | 2-2 |
| Nov | 3 | A | Bristol City | 2-3 |
| | 10 | H | PLYMOUTH A. | 5-3 |
| | 17 | A | Birmingham C. | 2-0 |
| Dec | 5 | H | ARSENAL | 2-5 |
| | 18 | H | WEST HAM UTD. | 3-1 |
| | 20 | H | IPSWICH TOWN | 0-0 |
| | 29 | H | OXFORD UTD. | 3-0 |
| Jan | 5 | H | O.P.R. | 3-2 |
| | 29 | A | Bristol Rov. | 5-0 |
| Feb | 2 | H | CARDIFF CITY | 1-0 |
| | 16 | H | HEREFORD UTD. | 1-2 |
| | 23 | A | Orient | 1-1 |
| | 26 | A | Plymouth A. | 0-1 |
| Mar | 1 | H | TOTTENHAM H. | 0-1 |
| | 8 | A | Southampton | 1-0 |
| | 14 | H | LEICESTER CITY | 4-2 |
| | 25 | H | NORWICH CITY | 1-2 |
| | 29 | H | BIRMINGHAM CITY | 0-6 |
| Apr | 2 | A | Ipswich Town | 1-2 |
| | 5 | H | CRYSTAL PALACE | 1-2 |
| | 19 | A | West Ham Utd. | 1-3 |
| | 23 | A | Chelsea | 0-0 |
| | 26 | H | FULHAM | 0-0 |
| May | 3 | A | Arsenal | |

midland youth

| | | | | |
|-----|----|---|------------------|-----|
| Aug | 20 | A | West Bromwich A. | 1-0 |
| | 30 | H | LEICESTER CITY | 5-2 |
| Sep | 5 | A | Wolves | 1-1 |
| | 13 | H | DERBY CO. | 2-1 |
| Oct | 3 | H | BIRMINGHAM CITY | 2-2 |
| | 11 | A | Derby Co. | 0-2 |
| | 25 | A | Luton Town | 0-1 |
| Nov | 14 | H | NORTHAMPTON TOWN | 3-0 |
| | 21 | A | Birmingham City | 0-0 |
| Jan | 10 | H | BRISTOL CITY | 1-1 |
| Feb | 5 | A | Leicester City | 2-1 |
| | 18 | A | Northampton Town | 2-2 |
| | 27 | A | Bristol City | 1-0 |
| Mar | 6 | H | WOLVES | 1-2 |
| | 20 | H | COVENTRY CITY | 0-1 |
| Apr | 3 | A | Coventry City | 2-2 |
| | 16 | H | LUTON TOWN | 2-2 |
| | 24 | H | WEST BROMWICH A. | 2-2 |

south-east counties

| | | | | |
|-----|----|---|-------------------|-----|
| Aug | 18 | H | CRYSTAL PALACE | 2-0 |
| Sep | 1 | H | CAMBRIDGE UTD. | 4-2 |
| | 15 | H | WIMBLEDON | 2-3 |
| | 22 | A | Peterborough Utd. | 0-0 |
| | 29 | H | BRISTOL ROV. | 6-0 |
| Oct | 6 | A | Charlton Ath. | 5-0 |
| | 13 | H | CHELSEA | 3-1 |
| | 20 | A | Cambridge Utd. | 1-1 |
| | 27 | H | CHARLTON ATH. | 2-1 |
| Nov | 17 | A | Crystal Palace | 1-2 |
| | 24 | H | PETERBOROUGH UTD. | 3-1 |
| Dec | 1 | A | Reading | 0-1 |
| | 8 | H | WEST HAM UTD. | 3-1 |
| Jan | 5 | A | Oxford Utd. | 2-0 |
| | 12 | A | West Ham Utd. | 1-2 |
| | 26 | H | TOTTENHAM H. | 2-1 |
| Feb | 2 | H | OXFORD UTD. | 3-0 |
| | 9 | A | Chelsea | 2-0 |
| | 16 | A | Tottenham H. | 3-1 |
| | 23 | A | Wimbledon | 2-0 |
| Apr | 7 | H | READING | 2-1 |
| | 9 | A | Bristol Rov. | 3-3 |



Midland Bank



Talk of the Town by the Chairman

Today being our last home League fixture, I would like to take this opportunity on behalf of our Club to thank you all for your loyal support and to hope that you will continue to support us during this coming season.

We all commence a new season with hopes of success and we feel at the County Ground that the success of promotion must surely come soon, as Bob Smith has built a team that has proved to the football world that we can hold our own with the top teams in the Country.

I would like to take this opportunity to thank everybody who has worked so hard for the Club during this past season including everybody connected with our Supporters Club, Rendezvous Club, Squash Club, the Stewards who have had a particularly busy season with our extra Cup commitments; the various committees including the Sportsmens Association and the Robins Association, everybody who has supported Doug Woodman in the Sports shop, with of course all of Duggy Buswells helpers. The people who rallied round when the ground needed extra protection. Last, but not least our office staff who work all hours when our Cup tie and League commitments are so heavy.

I am sure that Doug Buswell will be asking all of these people for a special effort during these coming summer months to help the Club build for the future.

We welcome today our friends from Barnsley and look forward to an entertaining game.

On Monday afternoon, Kick off 3 p.m. we play our second leg of the Wiltshire County Professional Shield against Chippenham Town. We drew the first leg played at Chippenham on Monday last 0-0 so the interest is wide open.

On Wednesday 8th May, Kick off 7.30 p.m. a Police International match between England and Wales is being played on our ground.

Today is a day of Presentations with Chris Kamara receiving his award from the Evening Advertiser as Player of the Year. Congratulations Chris, I am sure the lads will help you celebrate.

Also today we are being presented with a Honda vehicle to be used by Doug Buswells team to help promote our lottery sales.

This vehicle is being loaned to the club through the generosity of Mr. Geoff Groombridge of Bath Road Garage, Swindon.

Our Club name is being prominently displayed around the district, with both our mini-bus loaned by John Trembling of the Orchard Garage and now our Lottery van.

We are very grateful for such generosity and I can only hope that the advertising will make some return to our Sponsors.

Many of our local supporters will be saddened by the death of Chris Kent who was a sport loving person. Chris was a prolific scorer of goals for The Swindon Vics and in partnership with Bobby Godwin made many local records. Bobby Godwin played for Swindon for a while. Chris Kent was headmaster at Gorsehill School and gave every moment of his spare time, encouraging youngsters to enjoy sporty activities, and he will be missed by everyone who knew him.

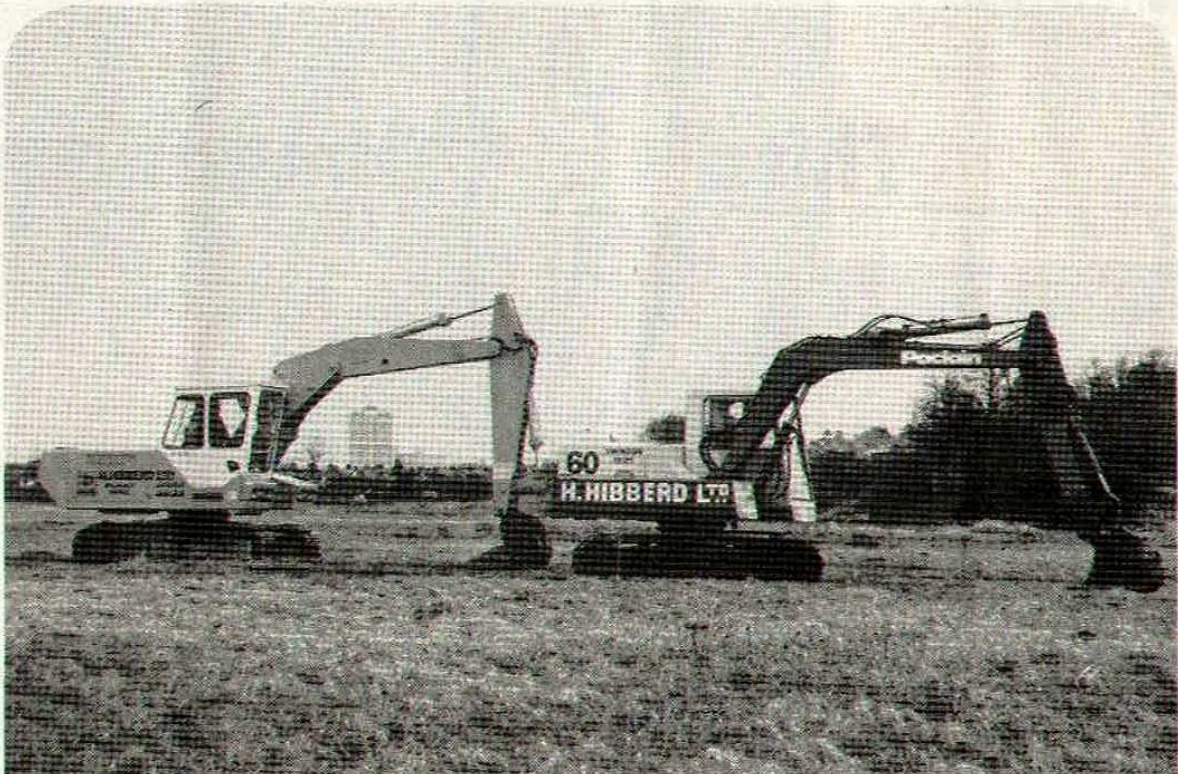
As this is our last programme, I wish to take this opportunity to remind everybody that Season Tickets will be on sale right through the close season and one can pay as little or as much as you like through the Summer months.

There seems to be a mistaken idea that we have stopped giving the Old Age Pensioners and children the cheaper price facilities. There is a difference this year, because to bring us into line with the majority of League clubs, we have taken the decision to issue these cheaper seats only to season ticket holders and not to match days as at present.

The North Stand and South Stand seats are available for the season including Reserve teams games for the sum of £34.20p against the normal price of £45.50p and again I emphasise the point that this amount can be paid for spread over the summer months.

Our Rendezvous box members have been finding it difficult to get to the club at half-time, in time to get a cup of tea, because of the congestion of people and we are hoping to improve these facilities before the beginning of next season.

Also hoping that you enjoy today's game and that you enjoy your summer break and watch the local paper for our Club news. Many people complain of the lack of this, perhaps we can improve on our past record.



Do you require

Tracked or Wheeled Excavators

Tracked or Wheeled Shovels

Tractors and Scrapers

Bulldozers

Tipper Lorries

Low Loaders

THEN HIRE FROM

H Hibberd Ltd

PLANT HIRE CONTRACTORS

29 Newport Street, Swindon

Tel: Swindon 36125 or 23876

Third 3 Dimensions

TOP GOALSCORERS (including League Cup & F.A. Cup)

- 28 Alan Mayes (TOWN), Andy Rowland (TOWN)
- 24 Terry Curran (Sheffield Wed.)
- 23 Terry Austin (Mansfield), Andy Crawford (Blackburn - 1 for Derby), Ronnie Glavin (Barnsley)
- 21 John Lyons (Millwall)
- 20 Paul Bannon (Carlisle)
- 19 Keith Edwards (Hull),
- 18 Bob Cumming (Grimsby), Trevor Lee (Colchester), John Leslie (Wimbledon), Ernie Moss (Chesterfield)
- 17 Phil Bonnyman (Chesterfield - 14 for Carlisle), Tony Kellow (Exeter - 12 for Blackpool), Ken Price (Gillingham)
- 16 Alan Birch (Chesterfield), Pat Earles (Reading), David Kemp (Plymouth - 1 for Carlisle), Kevin Kilmore (Grimsby), Ian Rush (Chester)
- 15 Kevin Drinkell (Grimsby), Mike Kearney (Reading), Duncan McKenzie (Blackburn), Phil Walker (Chesterfield)
- 14 Paul Berry (Oxford), Stan McEwan (Blackpool), Derrick Parker (Barnsley - 10 for Southend)

South East Counties

Junior League Table 19.4.80

| | P | W | D | L | F | A | Pts |
|------------------|----|----|---|----|----|----|-----|
| Swindon Town | 22 | 16 | 2 | 4 | 52 | 18 | 34 |
| Wimbledon | 21 | 13 | 3 | 5 | 55 | 28 | 29 |
| Reading | 21 | 11 | 2 | 8 | 41 | 29 | 24 |
| Tottenham | 22 | 9 | 6 | 7 | 43 | 39 | 24 |
| Oxford Utd | 22 | 11 | 2 | 9 | 47 | 51 | 24 |
| West Ham Utd | 22 | 9 | 5 | 8 | 47 | 37 | 23 |
| Cambridge Utd | 21 | 8 | 6 | 7 | 44 | 37 | 22 |
| Crystal Palace | 19 | 8 | 5 | 6 | 30 | 31 | 21 |
| Peterborough | 21 | 6 | 3 | 12 | 39 | 50 | 15 |
| Chelsea | 22 | 3 | 8 | 11 | 28 | 47 | 14 |
| Bristol Rov. | 20 | 5 | 4 | 11 | 26 | 47 | 14 |
| Carlton Athletic | 21 | 5 | 2 | 16 | 33 | 66 | 12 |

The Football Combination

Table of results to Monday 28th April 1980 (not incl)

| | P | W | D | L | F | A | Pts |
|-----------------|----|----|----|----|----|-----|-----|
| Tottenham H. | 39 | 24 | 9 | 6 | 91 | 46 | 57 |
| Norwich City | 39 | 22 | 10 | 7 | 72 | 38 | 54 |
| Arsenal | 39 | 23 | 7 | 8 | 89 | 46 | 53 |
| Chelsea | 40 | 22 | 9 | 9 | 62 | 41 | 53 |
| Fulham | 40 | 21 | 9 | 10 | 66 | 53 | 51 |
| Ipswich Town | 41 | 18 | 13 | 10 | 66 | 47 | 49 |
| Southampton | 42 | 16 | 14 | 12 | 68 | 57 | 46 |
| West Ham Utd | 40 | 18 | 8 | 14 | 70 | 60 | 44 |
| Q.P.R. | 40 | 18 | 7 | 15 | 85 | 69 | 43 |
| Bristol City | 36 | 17 | 8 | 11 | 71 | 49 | 42 |
| Leicester City | 42 | 17 | 7 | 18 | 66 | 65 | 41 |
| Luton Town | 41 | 12 | 17 | 12 | 47 | 51 | 41 |
| Birmingham City | 40 | 14 | 12 | 14 | 61 | 57 | 40 |
| Bristol Rovers | 38 | 13 | 12 | 13 | 54 | 64 | 38 |
| Crystal Palace | 41 | 12 | 13 | 16 | 63 | 67 | 37 |
| Oxford Utd | 41 | 10 | 12 | 19 | 50 | 66 | 32 |
| Cardiff City | 41 | 11 | 9 | 21 | 48 | 68 | 31 |
| Swindon Town | 40 | 11 | 7 | 22 | 49 | 73 | 29 |
| Plymouth Argyle | 41 | 9 | 9 | 23 | 50 | 93 | 27 |
| Reading | 39 | 10 | 7 | 22 | 57 | 110 | 27 |
| Hereford Utd | 39 | 7 | 9 | 23 | 47 | 80 | 23 |
| Orient | 41 | 7 | 8 | 26 | 29 | 62 | 22 |

LEAGUE TABLE up to and incl. Tues. April 29, 1980

| | P | W | D | L | F - A | W | D | L | F - A | Pts. |
|---------------------|-----------|-----------|----------|----------|--------------|----------|----------|-----------|--------------|-----------|
| Grimsby T | 45 | 17 | 2 | 3 | 42-16 | 8 | 8 | 7 | 27-26 | 60 |
| Blackburn R | 45 | 13 | 5 | 4 | 33-15 | 12 | 4 | 7 | 24-19 | 59 |
| Sheffield Wed. | 45 | 12 | 5 | 5 | 44-20 | 9 | 10 | 4 | 37-27 | 57 |
| Chesterfield | 45 | 15 | 5 | 2 | 43-16 | 7 | 6 | 10 | 25-30 | 55 |
| Colchester U | 45 | 9 | 10 | 3 | 36-20 | 10 | 2 | 11 | 25-36 | 50 |
| Exeter C | 45 | 14 | 5 | 4 | 38-22 | 5 | 5 | 12 | 22-43 | 48 |
| Carlisle U | 45 | 13 | 6 | 4 | 45-26 | 5 | 5 | 12 | 21-30 | 47 |
| Reading | 45 | 14 | 6 | 3 | 43-19 | 2 | 9 | 11 | 22-45 | 47 |
| SWINDON TOWN | 45 | 15 | 4 | 3 | 50-19 | 4 | 4 | 15 | 21-43 | 46 |
| Sheffield Utd. | 45 | 13 | 5 | 5 | 35-21 | 5 | 5 | 12 | 25-41 | 46 |
| Chester | 44 | 14 | 6 | 2 | 29-16 | 3 | 6 | 13 | 20-39 | 46 |
| Millwall | 45 | 14 | 6 | 3 | 49-23 | 2 | 7 | 13 | 16-35 | 45 |
| Rotherham | 44 | 13 | 3 | 5 | 37-21 | 5 | 6 | 12 | 20-42 | 45 |
| Barnsley | 45 | 10 | 7 | 6 | 29-20 | 5 | 7 | 10 | 23-36 | 44 |
| Plymouth A | 45 | 13 | 7 | 3 | 39-17 | 2 | 5 | 15 | 19-36 | 42 |
| Oxford U | 45 | 10 | 4 | 9 | 34-24 | 4 | 9 | 9 | 23-35 | 41 |
| Gillingham | 44 | 8 | 9 | 5 | 26-17 | 5 | 5 | 12 | 21-33 | 40 |
| Brentford | 45 | 9 | 6 | 7 | 32-26 | 5 | 5 | 13 | 26-47 | 39 |
| Southend U | 45 | 11 | 6 | 6 | 33-23 | 3 | 4 | 15 | 14-34 | 38 |
| Blackpool | 44 | 10 | 6 | 6 | 39-34 | 4 | 4 | 14 | 21-40 | 38 |
| Hull C | 44 | 10 | 7 | 4 | 28-20 | 1 | 9 | 13 | 22-48 | 38 |
| Mansfield T | 45 | 9 | 9 | 5 | 31-24 | 1 | 7 | 14 | 14-31 | 36 |
| Bury | 44 | 10 | 4 | 9 | 30-23 | 4 | 3 | 14 | 12-35 | 35 |
| Wimbledon | 45 | 5 | 8 | 9 | 31-36 | 4 | 6 | 13 | 18-43 | 32 |



**Programme
Plus**

DESIGNED & PRODUCED BY
SPORTOPIA PROMOTIONS LTD
172-176 THE HIGHWAY LONDON E1 9DD
TELEPHONE: 014818161

The picture that sums up the season, so near yet so far. Spurs goalkeeper Barry Daines is seen here thwarting Andy Rowland during the F.A. Cup tie at the county ground.

SPECIAL REPORT ON
**SWINDON
TOWN**



Wolves goalkeeper, Bradshaw, punches clear from Rowlands during the first leg of the semi-final.

DISAPPOINTMENT FOR SWINDON TOWN

BUT IT WAS STILL A GREAT SEASON



by COLIN BENSON

As Arsenal's shell shocked fans trudged despondently away from the County ground on a cool December night, Swindon Town supporters embarked on a night of jubilation.

In the well appointed Board Room, the whisky and gin was handed round, the champagne flowed and cigar smoke filled the air. This had been a great night for the West country, the sort of occasion that makes football worthwhile, a night

filled with tension and excitement, a night when above all, the small fry had come out on top.

Swindon Town had just dumped the mighty Arsenal on the seat of their pants, eliminated them from the Football League Cup and booked themselves for their second semi-final, in that competition. Yet amidst all the back slapping and niceties, one man although obviously enjoying the moment, kept himself firmly on the ground. He was Town's 35 year old manager, Bob Smith, a quiet yet firm man who said that all the praise belonged to the players. His time would come if Swindon won promotion.

Of course what has happened since then is now part of Swindon's history. The glories of so nearly reaching Wembley, holding Tottenham Hotspur in the F.A. Cup and being within minutes of victory in a rousing replay at White Hart Lane, are now but distant memories in a long arduous season. Such are the facts of life that those great occasions will be overshadowed by disappointments, the failure to realise their potential and parade their

skills in the Second Division next season.

The dreams were shattered in the wake of that agonising second leg of the League Cup semi-final, against Wolves at Molyneux, on February 12th. At that time, Town were lying in eighth position in the Third Division table, with 31 points from 27 fixtures. Because of their commitments in both cup competitions, the Robins had between three and five games in hand on the teams above, who were led by Grimsby Town with 39 points from 32 games.

There is a well worn saying in football circles that it is better to have the points than the games to play, but in this case Swindon Town had demonstrated such commitment and quality during their cup exploits, that no one doubted their ability to overhaul the pack in the rough and tumble of League action.

Astonishingly they flopped, taking just eight points from a possible 28 in a catastrophic run which produced just three wins, all at home, over Wimbledon, Blackpool and Mansfield Town - and incidently all by the same scoreline of 2-1 in

the following 14 games. It was poor Rotherham United who caught the brunt of Swindon's frustrations, suffering a 6-2 thrashing in mid-April, but by then of course it was too late.

During the trail of woe, the forwards who had previously scored 47 goals, converted only 12 chances, but even worse things were happening at the back, where they conceded 25 goals in those 14 games.

Analysis

The evaporation of their promotion challenge was about as unexpected as a snow storm in June - it happens occasionally but you still don't believe it. Anyway the situation prompted me to go down to the Wiltshire railway town to find out just why Swindon Town had come off the rails, when all had seemed set for a season of triumph.

Away from the fields of battle and in the pastoral tranquility of a hotel restaurant on the outskirts of the town, I posed the question to manager Bob Smith. It was in no way intended to cause the boss indigestion between the Pate' and the Scampi you understand, just a genuine desire to unravel the facts.

The former Manchester United player savoured another mouthful before replying: "If I had a one off

answer I would give it to you," he said candidly. "But I think it is an accumulation of a lot of things.

"The decisions I have come to, on why we have not gained promotion this year, are that defensively - and I am going to break it down to a purely professional reason - defensively we have not been good enough.

"During the cup runs when we were playing our normal game and attacking teams and the people up front were scoring and the mid-field men were scoring, it hid deficiencies which I did not realise were so acute.

"When we stopped scoring consistently - because obviously teams were prepared for us and tightened up - the onus then fell on the defence to get us points. They failed. It is as pure and simple as that. Our defence was not good enough to win promotion.

"In our final away games I tried a new system, dropping a forward back to make an extra man in midfield and playing four across the middle. But systems do not make any club, it is players that do that. I have always employed an attacking policy as a manager, but I have found that in the two seasons

I have been here, we have not accumulated enough points away from home, although we won eight away games last season."

By now the busy waiters were setting before us the appetising second course. I felt it was an opportune moment to state the obvious, so I asked Mr. Smith if he attached any blame on the cup runs. Was there a detrimental side effect?

The Reason

"That would be my easy option. You see it was all new to me. I had never played 17 cup ties before as a manager, it was a revealing experience.

"The simple way out for me, is to say yes that is the reason, put our decline down to that. At the end of the day it was all too much for them and we were not able to handle it. But I do not believe that. I think it was simply that we did not have enough ability at the back, to stop the goals going in against us.

"All the things we showed in the cup ties, our ability in midfield and up front are still there. We are very strong in those departments. However since those cup ties the onus fell on the back, and to be honest, they were found wanting. I am not calling individual players,

Andy Rowlands goes close with this effort during Swindon's 0-0 draw with Spurs.



The goal that earned Swindon a replay. Billy Tucker (right) heads the equaliser against Arsenal at Highbury.



but I know from a professional point of view we have got to be stronger. We need two defenders for next year, a right back and a central defender.

"Obviously the extra cup games must have had some effect on our players, but how much I cannot say. It has certainly been very frustrating watching us play well, then give goals away through silly errors, many of which we have gone over and over again in training. It happened at Grimsby and Carlisle. It makes me question whether I should

have seen this happening sooner. I

signed David Peach from Southampton, thinking that we needed to strengthen the left side, then the others started to crack. I need two defenders who know their trade and how to defend.

"I like to sit down before a game and think that my side are better than the opposition and that if we play to our full potential, we will always win. I am probably an egotist because I have concentrated too much on attacking players and

not enough on the back four.

"To be fair to the players, I have always wanted to be an attacking side and have therefore put more emphasis on the forwards and midfield. Consequently I have brought players in and then coached them to go forward and score goals. Where I have not shown enough realism is by neglecting the back.

"I love the Alan Mayes' who can take people on and beat them. The Ian Miller's, who can get beyond them. I don't like just to play in



Ray McHale salutes the ground, having just put Swindon ahead with a penalty at White Hart Lane.

front of the opposition, but to get beyond them and open them up. But in the last four months I have realised just how important it is to get a strong defence at the back. If I can get that right then we should be quite a force next season."

"Would you like a sweet Sir?" Our conversation was punctuated by a pleasant waitress. I chose a nice slice of cherry flan, but Bob Smith declined the invitation. "I'm getting ready for the beaches," he explained, patting his stomach and taking another sip of wine.

Alan Mayes makes it 2-1 to Swindon in the first leg of the Semi-Final with Wolves.



No Different

"If defence is the weak spot, how is it that the big guns of Arsenal and Stoke City did not exploit you?" I questioned.

"Just a minute," interposed Mr. Smith raising his hand. "How many goals did we have scored against us in those four games?" We conceded seven goals in four games. See how it kides you because we did not lose.

"It was no different in the F.A. Cup ties, we had three put past us at Torquay but drew and won at home. The only thing was that we scored more goals than we conceded."

By now the temptation to join me with a sweet had proved too much. "I tell you what, they are tempting aren't they," he said turning towards the waitress. "I'll have some, but I won't eat all of it, that will be my concession."

"It is my job to put it all right," continued the Swindon boss. "How I do that depends obviously on the availability of players, being able to create the money to buy them and by making the right decisions in the next couple of months."

"I can't go into too much detail, but no system is the be-all and end-all. A system firstly has got to suite your players. Players are your strength and you have to de-

vised a strategy that will get the best out of them."

What of next season. Will Bob prepare the team in exactly the same way this summer, or have recent events caused him to revise his programme?

The answer was decisive: "I have always had a good start to a season as a manager," he says. "I always go up to Scotland and play three games in five days - because those games are hard, it is always England v Scotland - so you know you are going to get tough matches. Then I try to have two games at home and then it is straight into the Football League Cup ties. So we have two weeks hard pre-season training, followed by the week in Scotland, and the final week before the season starts we concentrate on set pieces, getting everything honed down to a fine art. I have found this formula successful and don't see any reason to change it."

Ambition

"When I came here two years ago, my target was promotion, but I am a realist and knew it would not come easily. But having progressed so far I must admit that I will feel very disappointed if we don't do it next season. The Directors could not have been better, we have had our disagreements of course, but they have never stopped

me doing anything I wanted to do."

Club Chairman, Cecil Green, himself a former player and one that has a great understanding of that side of the game, later expressed the view that this had been a disappointing season, but far from a despondent one. The club is developing and will progress further, and the target is to get into the First Division.

That ambition is not as far fetched as might at first appear. You have only to look at Northampton Town - they went all the way - and Cambridge United - they are on the way - to see what can be done. And Swindon Town's assets in terms of facilities and crowd potential are far greater than either of those two clubs.

Back to the hotel where the coffee rounds off an excellent meal, Bob reflects: "One thing this season has done for us, is put us on the map. Take David Peach for instance. I don't think the player would have ever thought of coming to Swindon if it had not been for our fame in the cups this season. And Glen Cockerill was a star at Lincoln, with clubs like Nottingham Forest looking at him, but he chose us."

Despite the frustrations, the hang ups at not gaining promotion, I believe that Swindon Town have had a wonderful season and one of

A desperate lunge from Wolves goalkeeper Bradshaw, splits Andy Rowlands and Chris Kamara in the second leg at Molyneux.



which they should be justly proud. In terms of relativity Swindon have been successful and I am sure that club officials in Board rooms all over the country would settle for a run to the semi-final of the League Cup and to the fourth round of the F.A. Cup, could it be offered to them for next season.

Promotion will come because the County Ground possesses players of flair and vision, creative players who are worth their weight in gold. In the meantime the Town of Swindon has been able to enjoy a feeling of togetherness that a run in the cup creates for urban communities. They have been able to enjoy the spectacle of watching their team play with two wingers, a rare privilege these days, and above all they have had the opportunity to support a team that believe in positive attacking football.

Such courage deserves support, and although on that chill December night when Bob Smith so profoundly suggested that his time would come when promotion was won, he could well have been expecting to be celebrating this afternoon, I am sure he will enjoy the accolades even more when that time comes as it surely must.



Cheers. Swindon celebrate after beating Arsenal. Could they be toasting promotion this time next season?



From the Commercial Office

This being our last home game of the season I would like to thank all of you who have supported us throughout the past season.

Today we are pleased to become associated with **BATH ROAD GARAGE OF SWINDON**. Mr. Geoff Groombridge has kindly sponsored us by giving a Honda Van for our Commercial activities. It will be on show at the Ground today and be presented to our Chairman by Geoff before the game. To any of you who are Honda enthusiasts a visit to Bath Road Garages could be advantageous.

We shall continue our Lottery and other fund raising activities throughout the close season

together with a few new ideas. We shall have a stand at the Highworth Lions Motor Show which will be held on the County Ground extension on May 17th. I am reliably informed there will be something for people of all ages to see. So why not come and see us Saturday, 17th May.

Watch out for our 'GRAND DONKEY DERBY' in August.

Hope to see you all next season.

DOUG BUSWELL
Commercial Manager

Career details of current playing staff

| | TOTAL | 79-80 | 78-79 | 77-78 | 76-77 | 75-76 | 74-75 | 73-74 | 72-73 | 71-72 | 70-71 | 69-70 | 68-69 | 67-68 | 66-67 |
|------------------|--------|-------|--------|---------|---------|---------|---------|---------|---------|--------|--------|--------|--------|--------|-------|
| Templeman, John | 449-23 | 18 | (45-1) | (44) | (35-1) | (43-3) | (39-2) | (34-1) | (31-2) | (45-7) | (31-2) | (4) | (31-3) | (34-1) | (15) |
| Peach, David | 420-64 | 10 | (38-5) | (34-8) | (39-7) | (41-6) | (37-5) | (41-8) | (42-7) | (38-7) | (42-3) | (38-6) | - | - | - |
| Hamilton, Bryan | 262-55 | 1 | (21-1) | (36-4) | (18) | (41-10) | (35-10) | (42-16) | (42-11) | (16-1) | - | - | - | - | - |
| McHale, Ray | 379-77 | 41-8 | 46-5 | 45-9 | 41-9 | (46-12) | (45-10) | (44-8) | (36-10) | (35-6) | - | - | - | - | - |
| Allan, Jimmy | 226 | 43 | 24 | 45 | 43 | 10 | 6 | 35 | 13 | 7 | - | - | - | - | - |
| Stroud, Kenny | 252-22 | 43-1 | 44 | 37-10 | 42-5 | 42-5 | 19-1 | 17 | 5 | 3 | - | - | - | - | - |
| Williams, Brian | 245-24 | 42-3 | 25-2 | (19) | (32-3) | (46-5) | (35-1) | (35-9) | (10-1) | (1) | - | - | - | - | - |
| Greenwood, Roy | 206-34 | 4 | (28-3) | (16-4) | (16-1) | (40-8) | (32-5) | (42-10) | (21-3) | (7) | - | - | - | - | - |
| Tucker, Bill | 268-24 | 35-4 | (36-2) | (33-5) | (32-1) | (19-2) | (35-1) | (36-1) | (42-8) | - | - | - | - | - | - |
| Ford, Andy | 235-4 | 17 | 46 | 34-1 | (46) | (39-1) | (20-1) | (33-1) | - | - | - | - | - | - | - |
| Miller, Ian | 222-20 | 39-2 | 44-4 | (35) | (46-5) | (43-9) | - | (15) | - | - | - | - | - | - | - |
| Rowland, Andy | 238-90 | 43-20 | 28-13 | (41-14) | (45-17) | (46-16) | (35-10) | - | - | - | - | - | - | - | - |
| Mayes, Alan | 200-61 | 43-19 | 21-11 | (41-15) | (43-14) | (14) | (22-2) | - | - | - | - | - | - | - | - |
| Carter, Roy | 168-23 | 40-3 | 46-10 | 24-2 | (24-3) | (33-5) | (1) | - | - | - | - | - | - | - | - |
| Kamara, Chris | 164-24 | 33-5 | 28-2 | 40-10 | (39-3) | (24-4) | - | - | - | - | - | - | - | - | - |
| Cockerill, Glenn | 61-11 | 9-1 | (35-6) | (13-1) | (4) | - | - | - | - | - | - | - | - | - | - |
| Roberts, Kevin | 1 | - | - | 1 | - | - | - | - | - | - | - | - | - | - | - |
| Lewis, Russell | 51-3 | 40-3 | 9 | 2 | - | - | - | - | - | - | - | - | - | - | - |
| Abbley, Steve | 4 | 4 | - | - | - | - | - | - | - | - | - | - | - | - | - |

* Apps. for Lincoln City not included (79-80)

Figures in parentheses denote games for previous clubs
Totals include apps. as substitute

(League games only)

In Town Today: Barnsley



BACK ROW Left to right: Norman Hunter, Peter Springett, Gary Pierce, Tommy Graham
CENTRE Gerry Young (Coach), Michael McCarthy, Alan Little, Graham Pugh,
Ronnie Glavin, Norman Rimmington (Physiotherapist), Barry Murphy (Coach)
FRONT ROW

Bobby Flavell, Derek Bell, Glyn Riley, Allan Clarke, Alistair Millar,
John Collins, Phil Chambers. Photograph by courtesy of the Barnsley Chronicle

Worrying season for Barnsley

By Tony Pullein

Following their Fourth Division promotion success last year, Barnsley's main objective was to consolidate their place in Division Three this season. Now they have achieved that objective, but it has been a worrying campaign with relegation threatening for much of the time.

Manager Allan Clarke has made several changes in the side that won promotion last season.

Last summer he signed goalkeeper Gary Pierce from Wolves for £40,000, his old Leeds and England defensive colleague Norman Hunter, from Bristol City on a free transfer, and goal-scoring midfield man, Scottish international Ron Glavin, from Celtic for £50,000.

Since the season started he has added defender Neil Cooper (Aberdeen) and forwards Mike Lester (ex-Grimsby), Trevor Aylott (Chelsea) and Derrick Parker (Southend) to his payroll. And, just before the transfer deadline, he secured the signature of Welsh international defender Ian Evans from Crystal Palace and midfield man Bobby Downes from Watford.

Pierce opened his career with Huddersfield in 1971/72 and moved on to Wolves for £45,000 in 1973. He was in the side that played Manchester City in the 1974 League Cup final.

Known as the hard man of English football, Norman Hunter of the crunching tackle was capped 28 times by England during his Leeds United days. He was a member of all Leeds' successful teams under Don Revie and eventually left for Bristol City in 1976.

Glavin is now one of the Third Division's leading goalscorers, with 23 goals. He first entered League soccer with Partick in 1969/70 and was the subject of a £90,000 transfer to Celtic in 1975. He was capped by Scotland during his Parkhead days and in 1976/77 he was Celtic's top scorer with 26 goals.

Cooper, who has been filling the right-back position, first appeared in Aberdeen's senior side two seasons ago. Lester has scored several vital goals since his transfer from Grimsby earlier this season. His League career got under way with Oldham in 1972/73 and Manchester City paid £80,000 for him the following season. He didn't make much progress at Maine Road, though, and after a loan spell at Stockport, he joined U.S. side Washington Diplomats in 1976. He signed for Grimsby a year later.

Aylott was signed from Chelsea for £55,000 earlier this season. He grew up at Stamford Bridge and was loaned to Q.P.R. in 1976/77 but it wasn't until the following season that he gained his first League experience with Chelsea.

Parker was signed from Southend for £60,000. He began his career with Burnley and made about half-a-dozen League appearances for the Turf Moor club. Southend paid £80,000 for him in 1976 and for the past two seasons he had been their top scorer, with 23 in 1977/78 and 12 last season.

Downes was a reserve player with W.B.A. and he entered League soccer with Peterborough in 1967/68. He moved on to Rochdale in 1969, remaining at Spotland until signing for Watford in 1974.

Evans opened his career with Q.P.R. and was sold to Crystal Palace for £200,000 in 1974. He won 13 well-deserved Welsh caps and would have had more had his career not twice been interrupted with a broken leg.

So, it can be seen that the Barnsley team of today contains very few of the players who came up with them last season. The exceptions are defenders Mike McCarthy and Phillip Chambers.

Locally-born McCarthy earned his place in Barnsley's League team on the opening day of the 1977/78 season and he has been holding his place ever since. Chambers was still an apprentice when he made his League debut for Barnsley in 1970/71. He has now made more than 250 League appearances for them.

Ian Banks has been holding a regular place for the first time this season and Glyn Riley has recently been given a further run. Both came through from the junior teams.

Barnsley have won five away League games - at Blackburn (1-0), Sheffield Wednesday (2-0), Hull (2-0), Wimbledon (2-1) and Mansfield (4-1). They drew at Colchester (0-0), Bury (2-2), Millwall (2-2), Gillingham (1-1), Chester (0-0), Blackpool (1-1) and Rotherham (1-1) but lost at Chesterfield (0-2), Oxford (0-1), Sheffield United (0-2), Brentford (1-3), Carlisle (1-3), Plymouth (1-2), Grimsby (0-3), Reading (0-7), Exeter (1-2) and Southend (1-2).

From our Tame Statistician Dr. B.E. Cooper

O.K. then fellas, what went wrong then? We all have our own theories. I'll pause a moment while you tell the person next to you what you think went wrong. . . . Now you are back reading this article again let us see what we can learn from comparing this seasons results with last seasons results.

Last season we were close to promotion ending up with 57 points. This season we were up with the League leaders until we made our rather unlucky exits from League and F.A. Cups. Thus there was some sort of major change at this time. We had better look at the figures in three sets corresponding to

1. Last season complete
2. This season until mid-February
3. This season after mid-February

Let's look at the goals we scored at home matches first as shown below.

| | No goals | 1 goal | 2 goals | 3 goals | 4 or more goals | Goals per game |
|-------------|----------|--------|---------|---------|-----------------|----------------|
| 78/79 | 3 | 7 | 7 | 3 | 3 | 1.91 |
| Early 79/80 | 2 | 1 | 6 | 3 | 2 | 2.46 |
| Late 79/80 | 1 | 2 | 3 | 1 | 1 | 1.88 |

From this we see that last season we scored on average nearly 2 goals (1.91) per home game. This season we had increased this to nearly 2½ (2.46) goals per game. Then after our cup exits we fell back to last seasons standard of nearly 2 goals (1.88) per game. Although this was a clear change it would not seem to have been particularly decisive since by matching last years goals record we would still have expected to have been close to promotion as we were last season.

Let's look at goals scored away from home:

| | No goals | 1 goal | 2 goals | 3 goal | Goals per game |
|-------------|----------|--------|---------|--------|----------------|
| 78/79 | 5 | 10 | 5 | 3 | 1.26 |
| Early 79/80 | 4 | 4 | 3 | 2 | 1.23 |
| Late 79/80 | 6 | 3 | 1 | 0 | 0.50 |

This shows clearly one basic fact. Until our exit from the cups we were scoring goals in away matches at the same rate as last year. That is at about 1¼ goals per game. Too low I hear you cry. Well maybe. However after our cup exits we dropped to scoring only one goal in two games. Perhaps a consequence of our own success with home teams tightening up on Alan Mayes and Andy Rowlands who were enjoying much publicity - and rightly so.

Having noted one major change let us now look at the goals we have conceded. We concentrate first on home games:

| | No goals | 1 goal | 2 goals | 3 goals | Goals per game |
|-------------|----------|--------|---------|---------|----------------|
| 78/79 | 12 | 9 | 1 | 1 | 0.61 |
| Early 79/80 | 7 | 3 | 2 | 1 | 0.76 |
| Late 79/80 | 2 | 4 | 1 | 1 | 1.13 |

From this we see that even early in last season we were conceding goals at home at a slightly higher rate than last year. That is at 0.76 to 0.61 goals per game. After our cup runs this increased dramatically.

Looking at the goals conceded in away games we see much the same story:

| | No goals | 1 goal | 2 goals | 3 goals | 4 or more goals | Goals per game |
|-------------|----------|--------|---------|---------|-----------------|----------------|
| 78/79 | 5 | 7 | 7 | 1 | 3 | 1.65 |
| Early 79/80 | 2 | 3 | 6 | 1 | 1 | 1.69 |
| Late 79/80 | 1 | 3 | 4 | 0 | 2 | 2.10 |

Again we started the season by conceding goals away from home at much the same rate as last season. Again there was a dramatic rise in goals conceded after our cup exits;

Well what does it all mean? Until our cup exit our performance compared to last season was due to an increase in goal power at home and away. The goals against position remained much the same. However the change in February was both in terms of goal power and goals conceded. The goals conceded position being by far the more serious.

The remedy - no - that's not my job. I'll pause again for you to discuss things with the person next to you . . . Now you are back reading again let me say I have enjoyed the season even if I am a little disappointed. I hope you have enjoyed it.

I cannot finish without one final comment. I promise to support the team more positively as Notts. Forest Supporters did earlier this season when our team is struggling to regain its form. Will you? See you all next season. Happy Summer to you.

For High Class Central Heating, Plumbing
Painting and Decorating

Electrical Installations and Repairs

NORTH WILTS

Sanitary and Heating Co. Ltd.

NEWPORT STREET, SWINDON

Telephone: 35373

£££'s
OFF

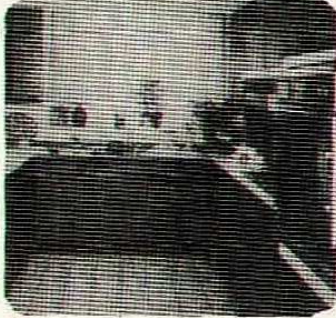
KITCHENS

£££'s
OFF

KITCHENS

£££'s
OFF

KITCHENS



**UNIVERSAL
CELESTE**

ALL UNITS EX STOCK

R.R.P.

**30%
OFF**

1 & 2 The Parade
Burford Rd
Carterton,
Oxon

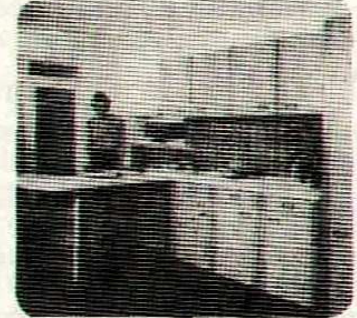


HYGENA NEW QA

ALL COLOURS
HELD IN STOCK

R.R.P.

**27½%
OFF**



Bavarian Kitchens
SOLID OAK, NATURAL OAK

R.R.P.

1 WEEK
DELIVERY

★

CARTERTON BUILDING SUPPLIES LTD

Tel: Carterton
841904
Tel:
Carterton 841665

IN A LEAGUE OF ITS OWN

TOYOTA

**CONTACT US FOR YOUR NEW
TOYOTA OR QUALITY USED CARS**

AT

**ORCHARD GARAGE
HYDE ROAD, UPPER STRATTON,
SWINDON. TEL: 721 220**

MAIN TOYOTA DEALER FOR WILTSHIRE

Soccer Scene by Tony Pullein

Wimbledon's decision to place their entire first-team squad on the transfer market had a remarkable affect. Shortly after the players had been informed, they went out to beat relegation rivals Hull City by 3-2 to end their run of 14 games without a win.

Bottom dogs Wimbledon have long since accepted that relegation is inevitable and their complete team can be bought for £400,000. The highest-priced player is midfield man Steve Galliers, on offer for £150,000, but Alan Cork, last season's top scorer with 25 goals, will be allowed a free transfer if no early offer is received.

Wimbledon will use most of the cash to improve their ground. "There is no point in having a Second Division team if you don't have the ground to go with it," said chairman Ron Noades. Wimbledon's first plan is to build a pub and restaurant complex, a project that will increase revenue. They then hope to increase seating accommodation to around 3,000.

Newport County last week earned their place in next season's European Cup-Winners' Cup --- without kicking a ball! Already through to the final of the Welsh Cup themselves, they had to await the result of a replay between Shrewsbury and Swansea to know their opponents.

In a nail-biting tie, Shrewsbury knocked out the Swans on penalty deciders. And that means that Newport become the first Fourth Division Club ever to appear in a European Cup --- irrespective of the result of the final.

If Shrewsbury should beat Newport in the final, UEFA rules do not permit an English club to represent Wales. So the runners-up will go forward. But manager Len Ashurst is obviously hoping his team will go forward as holders of the Welsh cup.

Of more immediate concern to the Newport boss is the position at the top of the Fourth Division. A magnificent run of ten consecutive victories --- four short of a League record --- took them into third place in the table and made them favourites to go up with Walsall and Huddersfield, leaving Pompey and Bradford City to fight for the fourth place.

Newport are now the Fourth Division's oldest inhabitants, having been in that section since their relegation in 1962. As they bid to get out this year they have already broken several clubs records. Their home win over Rochdale gave them 56 points which equalled their previous highest for a season. A few days earlier they

scored their tenth away League win - a new club record.

Blackburn's Andy Crawford hit his first-League hat-trick in their 4-2 win over Reading. That was a badly needed victory for, a few days earlier, their fabulous run of eight successive victories was brought to an end by Exeter. "We needed to get back to winning ways quickly in order to remain in contention for promotion," said player-manager Howard Kendall.

Andy Rowland performed the best individual scoring feat in Third Division football this season when he crashed home four goals in our 6-2 win over Rotherham.

At the bottom of the Fourth Division, anxious eyes were being cast at the grim fight between Altrincham and Weymouth for the right to become the first champions of the Football Alliance and the nomination for a place in the Football League next season.

If Altrincham come out on top then they will almost certainly win election at the expense of one of the bottom four Fourth Division clubs. Their F.A. Cup record in recent years has earned them a great deal of support from top clubs, especially Everton and Tottenham who were both held to a draw on their own ground by the non-Leaguers.

A Weymouth win would bring a sight of relief to the re-election applicants for the Dorset club is not exactly situated in a hot-bed of soccer and they have done little to draw attention for their League claim to the clubs that hold the voting power in the League.

Rochdale's new manager Bob Stokoe, who took over last November, has done a very good job defensively but his team is sadly lacking in attacking ideas. When Rochdale were beaten 0-1 at Doncaster, they looked back on a run that had produced just one goal in 15 games!

Ian Botham's brief spell as a professional footballer has come to a temporary halt now that the cricket season is upon us. He played his final game of the season in a testimonial match at Chelsea. Though Botham didn't score in a League match, he did hit an important goal for Scunthorpe in their North Midland League Cup win at Darlington.

On the day that he turned his back on soccer for this season, Ian Botham was given the news that he had been selected captain of the MCC team due to meet County Champions Essex.



CASTLE'S

Office and Bakery

4 and 5 MARKET STREET SWINDON

Telephone 22017

Specialists—

Birthday Cakes : Wedding Cakes : Dairy Cream :
Pastries : Crusty Bread : Buns : Rolls : Sponges



RIMES OF SWINDON

INTERNATIONAL TRAVEL AGENTS

LUXURY COACH HIRE

FOOTBALL EXCURSIONS

Dep. from
County Ground

All starting from County Ground Car Park.

SERVICE DIRECT TO THE GROUND

Book now at

102, Commercial Road,
Swindon
Telephone 27113

or

65a Cricklade Street.
Cirencester.
Telephone 3479

or any Rimes Booking Agents

BALL DONOR

C. & R. SECURITY SERVICES LTD
Marlborough House
High Street, Swindon
Telephone: 45316

Who wish the Club good
luck for promotion next Season



SWINDON

- 1** Jimmy ALLAN
- 2** John TEMPLEMAN
- 3** Andy FORD
- 4** Glenn COCKERILL
- 5** Russell LEWIS
- 6** Roy CARTER
- 7** Ian MILLER
- 8** Chris KAMARA
- 9** Andy ROWLAND
- 10** Alan MAYES
- 11** Brian WILLIAMS
- 12**

BARNSELY

- Garry PIERCE **1**
- Neil COOPER **2**
- Norman HUNTER **3**
- Ronnie GLABIN **4**
- Ian BANKS **5**
- Mick McCARTHY **6**
- Ian EVANS **7**
- Derrick PARKER **8**
- Glyn RILEY **9**
- Mike LESTER **10**
- Bobby DOWNES **11**
- 12**



REFEREE:
Mr. MICHAEL J. TAYLOR (Walmer, Kent)
 Started refereeing in 1958 whilst in the Royal Marines, and progressed via the Kent and Southern Leagues to the Football League list. Refereed the 1971/72 Southern League Cup Final, and lined a European Cup Winners Cup Semi-Final in 1973/74. Was a linesman, also, in the 1972/73 Anglo-Italian Tournament.

Linesmen:-

Red Flag: Mr. H.W. KING (Merthyr Tydfil) Yellow Flag: Mr. B.N. PIKE (Yeovil)

- A Blackburn v Bury
- B Blackpool v Chester
- C Brentford v Millwall
- D Chesterfield v Exeter
- E Gillingham v Plymouth
- F Grimsby v Sheffield Utd
- G Hull City v Southend
- H Rotherham v Reading
- I Sheffield Wed v Carlisle
- J Wimbledon v Mansfield
- K Bolton v Wolverhampton
- L Brighton v Everton
- M Coventry v Arsenal
- N Leeds v Manchester Utd
- O Liverpool v Aston Villa
- P Manchester City v Ipswich
- Q Norwich v Derby
- R Nottm. Forest v Crystal Palace
- S Southampton v Middlesbrough
- T Tottenham H v Bristol City

SATURDAY MAY 3

Designed and Printed by E&W Colourprint Ltd